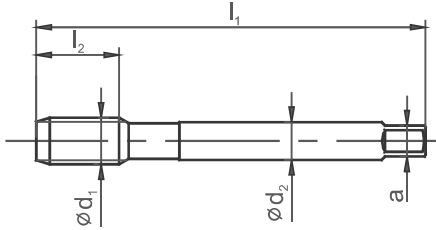


Gwint metryczny ISO DIN-13



HSSE

TN2

DIN
376

800X

C-TN2

B-TN2

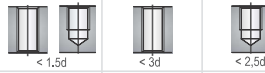
C-R40-TN2



Rodzaj materiału obrabianego



Typ otworu



Rodzaj materiału

HSSE

HSSE

HSSE

Rodzaj powłoki

TN2

TN2

TN2

Nakrój

C / 2-3P

B / 4-5P

C / 2-3P

M $\varnothing d_1$	P	l_1	l_2	l_{R40}	l_3	$\varnothing d_2$	a		Norma	DIN-376		
									Tol.	ISO2 (6H)	ISO2 (6H)	ISO2 (6H)
									INDEX	D2-123X01	D2-113X01	D2-513X01
M3	0,50	56	11	5	-	2,2	1,8	2,50	0030	○	○	○
M4	0,70	63	12	8	-	2,8	2,1	3,30	0040	●	●	●
M5	0,80	70	14	10	-	3,5	2,7	4,20	0050	●	●	●
M6	1,00	80	18	12	-	4,5	3,4	5,00	0060	●	●	●
M8	1,25	90	20	15	-	6,0	4,9	6,80	0080	●	●	●
M10	1,50	100	20	17	-	7,0	5,5	8,50	0100	●	●	●
M12	1,75	110	24	18	-	9,0	7,0	10,20	0120	●	●	●
M14	2,00	110	25	20	-	11,0	9,0	12,00	0140	●	●	●
M16	2,00	110	32	20	-	12,0	9,0	14,00	0160	●	●	●
M18	2,50	125	32	25	-	14,0	11,0	15,50	0180	●	●	●
M20	2,50	140	32	25	-	16,0	12,0	17,50	0200	●	●	●
M22	2,50	140	32	25	-	18,0	14,5	19,50	0220	●	●	●
M24	3,00	160	38	30	-	18,0	14,5	21,00	0240	●	●	●
M27	3,00	160	38	30	-	20,0	16,0	24,00	0270	●	●	●
M30	3,50	180	40	35	-	22,0	18,0	26,50	0300	●	●	●
M33	3,50	180	45	35	-	25,0	20,0	29,50	0330	●	●	●
M36	4,00	200	50	40	-	28,0	22,0	32,00	0360	●	●	●
M39	4,00	200	55	40	-	32,0	24,0	35,00	0390	●	●	●
M42	4,50	200	60	45	-	32,0	24,0	37,50	0420	●	●	●
M45	4,50	220	60	45	-	36,0	29,0	40,50	0450	○	○	○
M48	5,00	250	65	50	-	36,0	29,0	43,00	0480	○	○	○
M52	5,00	250	65	50	-	40,0	32,0	47,00	0520	○	○	○

ISO	Vc (m/min)		
P	5-35	5-35	5-35
M	5-15	5-15	5-15
K	5-25	5-25	10-25
N	10-30	10-30	10-30
S	-	-	-

Przykład zamówienia

D2-123X01-0390

Gwintownik 800X M39-6H DIN-376 C HSSE TN2

● Dostępne z magazynu

○ Na zapytanie